

Physiotherapist



NHS

**Lancashire Teaching
Hospitals**

NHS Foundation Trust

What is a Physiotherapist?

Physiotherapy encompasses a range of interventions, services and advice aimed at restoring, maintaining and improving people's function and movement and thereby maximising the quality of their lives.

Physiotherapists combine their knowledge and skills to identify an individual patient's functioning needs. They assess and treat a broad range of physical problems associated with different systems of the body:

- Neurological
- Musculoskeletal
- Cardiovascular
- Respiratory

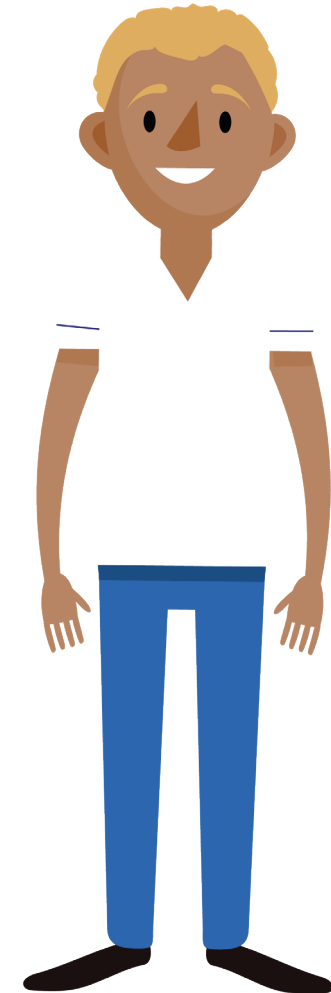
Where will you find our Physiotherapists?

Our Physiotherapists can be found in nearly all adult and paediatric inpatient areas at Preston and Chorley. They also have their own out-patient departments and gyms on both sites.

Some of our Advanced Practitioners/Consultant Physiotherapists are found working in specialist pathways such as Orthopaedics, Respiratory and ED.

Future aspirations for the profession:

- Expand and develop the Advanced and Consultant workforce in specialist areas
- Introduce degree apprenticeships



**Support workforce:
Therapy Assistants
Assistant Practitioners**