

# Speech and Language Therapist



NHS

Lancashire Teaching  
Hospitals

NHS Foundation Trust

## What is a Speech and Language Therapist ?

A Speech and Language Therapist (SLT) provides assessment, diagnosis, treatment, support and care for children and adults who have difficulties with communication, voice, eating, drinking and swallowing. Speech and language therapists work in different settings and benefit people of all ages.

### Hospital Setting:

**Adults:** SLTs support adults with communication, voice and swallowing difficulties as a result of medical conditions, such as stroke, head and neck cancer, Parkinson's disease and dementia.

**Children:** SLTs support premature babies and infants with difficult feeding conditions from birth through weaning to eating and drinking. They also see children in hospital who have communication and/or swallowing difficulties.

### Community Setting:

**Adults:** SLTs support adults who have developmental conditions such as learning disabilities, autism and Down syndrome.

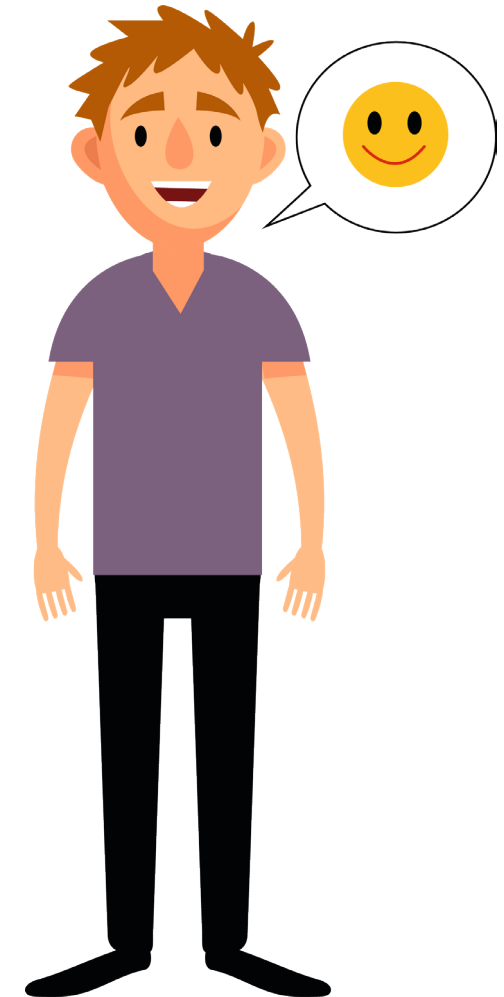
**Children:** SLTs support children with primary speech, language and communication difficulties, such as stammering and developmental delays.

## Where will you find our Speech and Language Therapists?

Our SLTs can be found in adult and paediatric services across both in-patient and out-patient pathways at Preston and Chorley.

## Future aspirations for the profession:

- Expand the Advanced and Consultant workforce in specialist areas
- Work with local HEI's on development of a local degree apprenticeship



Support workforce:  
Speech and Language Therapy  
Assistant  
Speech and Language Therapy  
Assistant Practitioner